



PROFILE 2021

GOOILTECH
CO., LTD

CONNECTING TO
SUCCESS



GOOILTECH

CONNECTING TO SUCCESS

CONTENT

03	Vision, Mission, Core Value	14	Fabrication Capacity
04	Open letter	18	Installation Capacity
06	Activities	32	Typical Contracts
08	Occupation safety, health and Quality Policy	34	Awards, Certificates
10	Manpower ability	36	Partners & Clients
12	Equipment and machinery capacity		

VISION, MISSION CORE VALUE

1

VISION

Continuously develop to become a leading company in installing, manufacturing & fabricating fields.

2

MISSION

We not only create high-quality products and services that meet the demands of our customers, but also bring high value to the community and contribute to social development.

3

CORE VALUE

Innovation: Gooiltech constantly researches and innovates the production process with the goal of bringing high efficiency, energy saving and environmental friendliness.
Professional: Gooiltech's employees are constantly learning, exchanging expertise, trying to overcome challenges and maintain stability in high-pressure jobs.
Efficiency: Gooiltech considers the work efficiency as an important and decisive factor when implementing Projects.
Reputation: Gooiltech considers the belief of customers and considers trust as the decisive factor for success.
Dedication: Gooiltech always maintains the rule of law, professional ethics and considers customer satisfaction as a measure of development.

GOOILTECH

Open Letter



CONNECTING TO SUCCESS

**“TAKING ADVANTAGE OF THE
COMPANY’S STRENGTHS AND THE GOOD
SIGNS OF THE MARKET, GOOILTECH WILL
RETAIN IT’S POSITION AND SUSTAINABLE
GROWTH UP TO 2025”**



First of all, Gooiltech Limited Company would like to show best regards to the dear customers, partner !

Gooiltech Co.,Ltd was founded in 2014, has the head office at No 395, Hung Vuong Road, Hung Vuong Ward, Hong Bang District, Hai Phong City, Vietnam. Gooiltech specializes in:

- Design, Fabrication, Installation, Repair, Maintenance of industrial project (Thermal power, Petrochemical, Cements, Steel plants...)
- Precision Mechanical Fabrication.
- Blasting and Painting (Polibrid, Flake Lining...)

With the motto **“CONNECTING TO SUCCESS”**, Gooiltech is always meets the demands of Clients and considers the quality, progress assurance as our top goal.

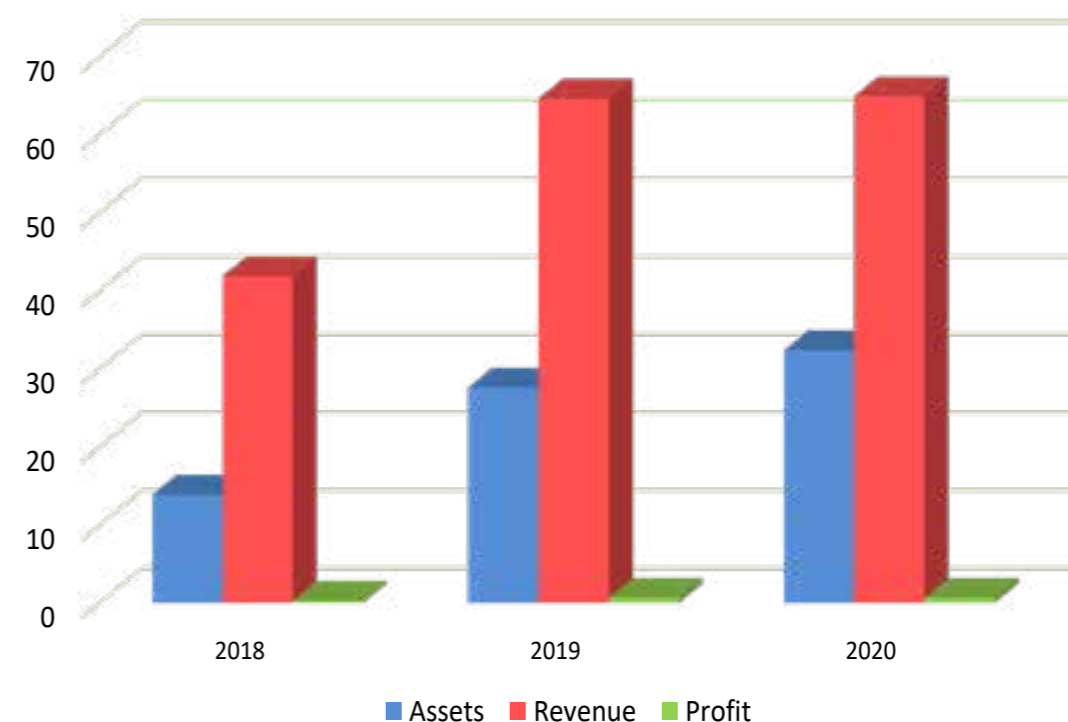
We look forward to cooperating with our customers with the target:

“Share - Cooperate - Sustainable Development”

WE ARE VERY PLEASED TO COOPERATE WITH YOU!



FINANCIAL RATIOS
Unit: VND Billion



ACTIVITIES

We provide customer with the best services and best quality



POWER
CONSTRUCTION &
AUTOMATION



MAINTENANCE,
INSTALLATION



BLASTING AND
PAINTING



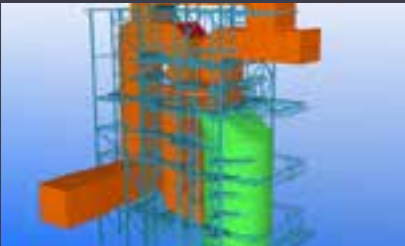
BUSSINESS AND
TRADING



FABRICATION &
PRECISION
MECHANICAL



CONSULTANCY
AND DESIGN



Why choose Us?



Gooiltech is committed to putting customer benefits first and always considers quality, progress assurance as our top goal



OCCUPATIONAL SAFETY & HEALTH POLICY

To ensure that all activities within the company are carried out safely in a safe working environment for all employees, customers and communities within the Company's control; To ensure the safety for equipments and assets of the Company as well as customers and the community.

To commit to comply with laws and local requirements as well as requests from customers.

To commit to take all precautionary measures to prevent injuries and health impairments for all employees, customers and communities within the Company's control

To ensure the training and providing appropriate information to staffs and subcontractors regarding safety standards and safety regulations as well as safety instructions while working

To ensure the establishment and maintenance of occupational health and safety management systems in accordance with OHSAS 18001: 2007 to prevent and minimize the risk of unsafety and occupational health hazards; to constantly improve to perfect the system.



**" ENSURING
WORKER SAFETY IS
THE BEST "**



**" SAFETY BRINGS
HAPPINESS TO
PEOPLE, FAMILIES
AND ENTERPRISES"**

QUALITY POLICY

1

To let Gooiltech become one of the leading companies in fabrication, Installation, repair and Maintenance

2

To meet the increasing demand of clients and markets

3

To prioritize in enhancing the resources to achieve the target of "Safety - Quality - Progress - Efficiency"

4

To continuously improve technology, equipment, management and create a modern and professional working environment.

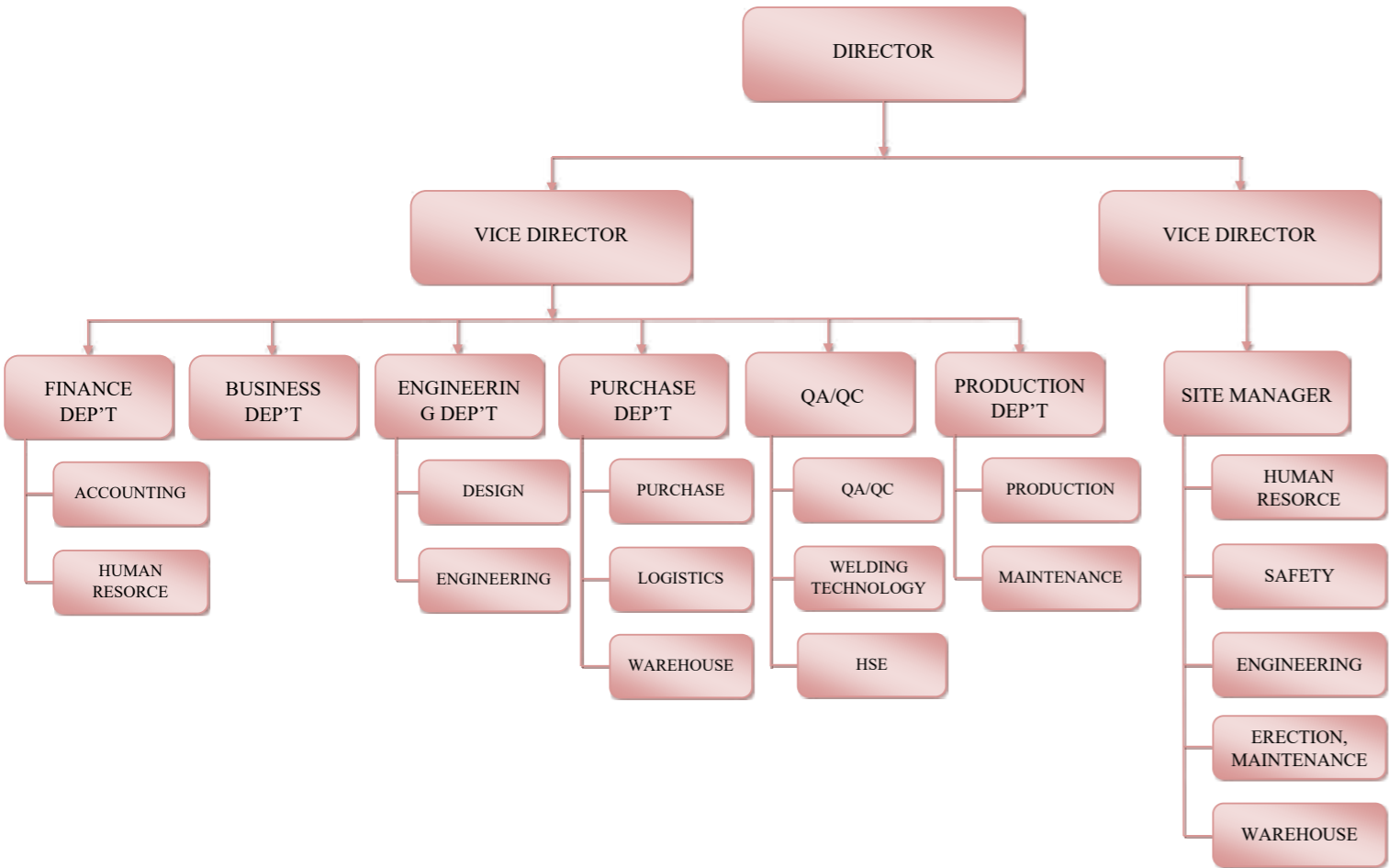
5

To organize, manage and execute adequately all production and business aspects. regularly operate, maintain and upgrade the quality management system of ISO 9001 : 2015 to gradually increase the quality

MANPOWER

Gooiltech Company always considers human resources as a decisive factor to the quality and efficiency of production and business, we understand “Human is the subject of building the source of knowledge and the decisive factor for success of the business”.

ORGANIZATION CHART



PROFESSIONAL, CREATION, INNOVATION

Gooiltech has always focused on developing human resources, conducting a comprehensive assessment to build long term, high quality, sustainable inheritance and respond the development goals of the Company.



No.	MANPOWER RESOURCES	QUANTITY
I	INDIRECT MANPOWER	37
1	Board of Director	2
2	Staff in charge of Safety	2
3	QA-QC Staff	3
4	Design Engineer	6
5	Electrical Engineer	6
6	Mechanical Engineer	4
7	Supervisor	7
8	Admin staff	2
9	Accountant	2
10	E & M management staff	3
II	DIRECT MANPOWER	189
1	6G Welder	15
2	3G Welder	20
3	Scaffolder	70
4	Fitter	15
5	Pipe Wroker	15
6	Blaster and Painter	12
7	Electrican	12
8	Processing & Fab worker	30
III	OTHER RESOURCES	30
	Total	256



EQUIPMENT AND MACHINERY CAPACITY

Gooiltech is owning a wide range of machinery and equipment that are using in the field of precision mechanical processing, steel structure fabrication which meet the technical & safety requirements of big projects such as thermal power plants, cement plants, oil refineries.

Gooiltech always considers machinery and equipment as a companion during the process of construction and development



No.	TYPE OF EQUIPMENT	ORIGIN	TECHNICAL SPECIFICATION
I	EQUIPMENT FOR PRECISION MECHANICAL FABRICATION		
1	Milling Machine OKK CMV 630	Japan	
2	CNC - Milling Machine SHIZUOKA	Japan	
3	Lathe Machine Hitachi	Japan	
4	CNC - Lathe Machine MORISEIKI	Japan	
5	Band Saw Machine HD350	Japan	D: 350 mm
II	EQUIPMENTS FOR FABRICATION AND INSTALLATION		
1	Lazer Cutting F6020	China	Capacity 6000 Kva
2	Band Saw machine HD600	Japan	D: 600 mm
3	Vertical Drill OOYA RE2-1300A	Japan	
4	Bending Machine ADH	Japan	P = 160 Ton, L 2500mm
5	MIG Welding Machine 500A	Japan	I = 500A
6	TIG Welding Machine WSM400IJ	Japan	
7	Gow Welding Machine	Japan	I = 800A
8	Heating machine	Japan	
9	Chain Block (1T, 2T, 3T, 6T, 10T)	Korea	
10	Gas - Plasma cutting Machine	China	Thickness 6-100 mm
11	Gas - Plasma cutting Machine (Pipe)	China	D 4000 mm
12	Hydraulic Press Machine	Japan	P = 500 Ton
13	Crane	Korea	Q = 5 Ton
III	BLASTING AND PAINTING DEVICES		
1	Air Compressor	Japan	Capacity 55 Kw
2	Ultra High Pressure Pump UHP II C-2500	Singapore	Pressure: 2500 Bar
3	Painting Machine Graco XP70-HF	USA	Mix ratio 1:2
4	Painting Machine DSF 75	Korea	Scale 1:75
5	Manual blasting device	Viet Nam	Blasting by steel Grit
6	Humidity Machine SK-VNK-120	Japan	Capacity 65 Kw
7	Concre Substrate - DFT machine Positector 200	USA	
8	Moisture Machine Elcometer 319	UK	
9	DFT machine Elcometer 456	UK	
IV	OTHERS EQUIPMENT		
1	Hydro Test Pressure Pump	China	530 Bar

CAPACITY OF FABRICATION

With comprehensive technology line as well as modern and precision machinery, our workshop at Km 12 + 500 Nam Hoa village, An Hung commune, An Duong district, Hai Phong city meets the requirements and standards of domestic and international customers.



EQUIPMENT



FABRICATED PRODUCTS

With comprehensive technology line as well as modern and precision machinery, our workshop at Km 12 + 500 Nam Hoa village, An Hung commune, An Duong district, Hai Phong city meets the requirements and standards of domestic and international customers.



PRECISION MECH PRODUCTS



CAPACITY OF INSTALLATION

What we do?

SAFETY - QUALITY - PROGRESS - EFFECIENCY



*Installation of Tie Valve
Mong Duong 2 Thermal Power Plant*



*Steam Piping Repair -
Mong Duong 2 Thermal Power Plant*



*Absorber heat exchangers Replacement
Mong Duong 2 Thermal Power Plant*



*Scaffolding Installation for Boiler Maintenance
Mong Duong 2 Thermal Power Plant*



*Blasting and Painting CWP (Polibrid)
Mong Duong 2 Thermal Power Plant*

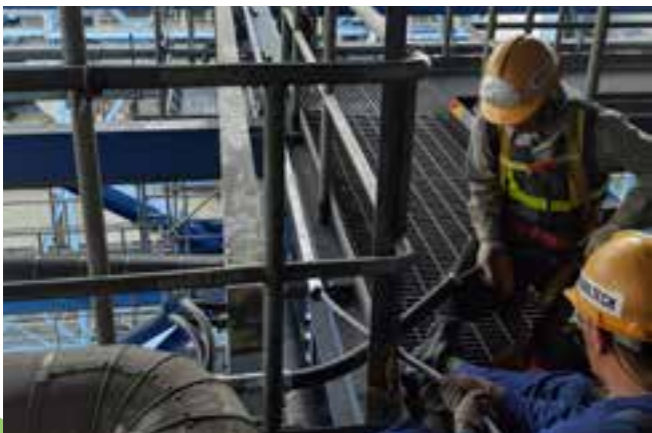
CAPACITY OF INSTALLATION

What we do?

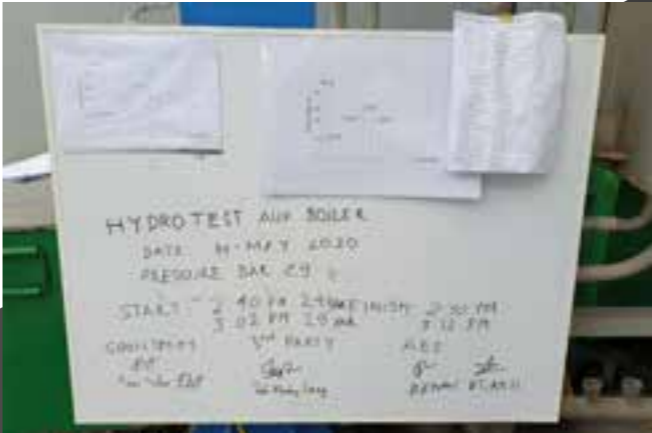
SAFETY - QUALITY - PROGRESS - EFFECIENCY



*Fabrication & Installation Ash Chute U1, 2
Mong Duong 2 Thermal Power Plant*



*Socket Panel for ESP&SDCC Install Service
Mong Duong 2 Thermal Power Plant*



*Hydro test AUX. Boiler & Deaerator Tank
Mong Duong 2 Thermal Power Plant*



*Install the Power Cable for Level Gauge of Reheater
Mong Duong 2 Thermal Power Plant*



*Maintenance for Control valve & Actuator
Mong Duong 2 Thermal Power Plant*

CAPACITY OF INSTALLATION

What we do?

SAFETY - QUALITY - PROGRESS - EFFECIENCY



*Scaffolding Erection
Thai Binh 1 Thermal Power Plant*



*Chọc xỉ đáy lò
Thai Binh 1 Thermal Power Plant*



*Insulation Installation (TA)
Thai Binh 1 Thermal Power Plant*

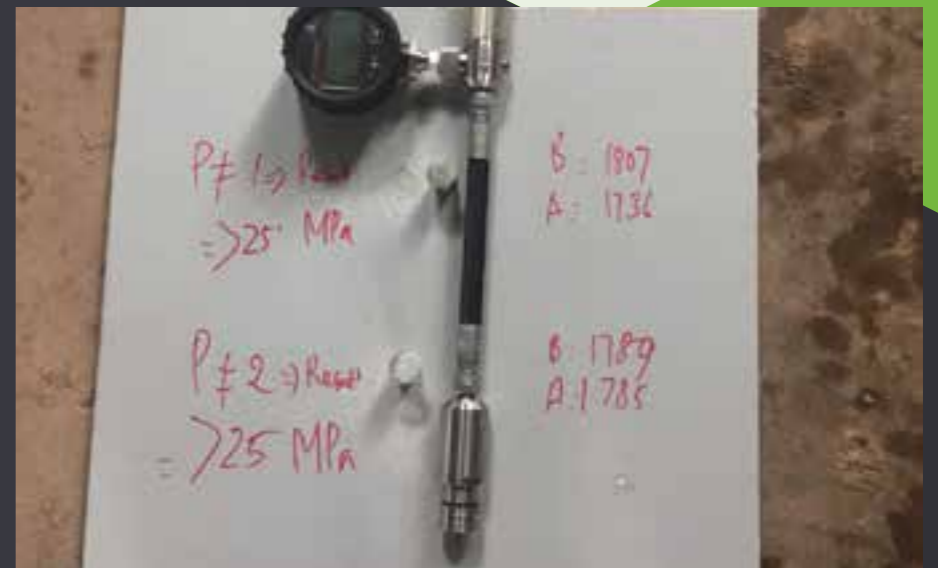


*Blasting & Painting Storage Container EVN GENCO 3
Thai Binh 1 Thermal Power Plant*



*Insulation Installation (TA)
Thai Binh 1 Thermal Power Plant*

BLASTING AND PAINTING



*FGD, SCR, Absorber (Flake Lining)
Blasting and painting Ceilcote
Ha Tinh Formosa Project*

BLASTING AND PAINTING



Fire Proof Coating Application

FGD (Flake Lining) Blasting and Painting

NSRP Project



PROJECTS

Some typical Projects

1

MONG DUONG 2 TTP

2014 - NOW

Working as long - term Contractor

2

HAMADA CONVEYOR

1/2018 - 6/2018

Design and Deployment of Conveyor systems

3

HA TINH FORMOSA PROJECT

11/2018 - 4/2019

FGD, SCR, Absorber
Blasting and Painting
Area: 800 M2
Caterogy: Ceilcote 370 Primer,
Ceilcote 282 Flakeline

4

NGHI SON REFINERY AND
PETROCHEMICAL

4/2019 - 6/2019

FGD - B400 Blasting and Painting
Area: 1000 M2
Caterogy: Ceilcote 370 - 380 Primer,
Ceilcote 282 Flakeline, Ceilcote 6640

5

AMON NITRAT

11/2020 - 12/2020

Scaffolding & Insulation

6

NGHI SON 2 TTP

9/2020 - NOW

Supply materials & Steel structure
Fabrication



SOME TYPICAL CONTRACTS

No.	PROJECT / WORK DESCRIPTION	EXECUTED VALUE (VND Billion)	EXECUTION PERIOD	CLIENT
1	Provide shop drawing for BOP structure	0.38	02/07/2015 - 08/01/2016	Lisemco 2 JSC
2	Supply manpower according - PO.VL-1300M2213	1.30	16/03/2016 - 4/5/2019	Main contractor for executing design, manufacture, erection structure and facilities for MD 1 thermal power plant
3	Supply materials, manpower for repair work of platform structure of boiler and cyclone	1.79	05/05/2016 - 06/06/2018	Main contractor for executing design, manufacture, erection structure and facilities for MD 1 thermal power plant
4	Installation of boiler tube erosion shield	12.4	03/07/2016 - 23/07/2016	Doosan Heavy Industry Viet Nam
5	Supply steel plates	6.72	19/12/2016	Marubeni Itochu Steel Viet Nam Ltd
6	Supply steel plates	5.49	4/5/2017	Marubeni Itochu Steel Viet Nam Ltd
7	Installation of boiler tube erosion shield Unit 2	2.58	11/05/2017 - 02/08/2017	Mong Duong Power Co. Ltd
8	Installation of boiler tube erosion shield and perforated support	3.62	22/06/2017 - 07/08/2017	Doosan Heavy Industry Viet Nam
9	Service heat Tracing CCT - 08	0.7	08/09/2017 - 20/10/2017	Mong Duong Power Co. Ltd
10	Install Oxygen Panel, Control Cable	0.95	12/01/2018 - 03/07/2018	Mong Duong Power Co. Ltd

No.	PROJECT / WORK DESCRIPTION	EXECUTED VALUE (VND Billion)	EXECUTION PERIOD	CLIENT
11	Supply painting Materials for Pipe	1.60	16/07/2018	Main contractor for executing design, manufacture, erection structure and facilities for MD 1 thermal power plant
12	Supply materials, manpower, equipment for painting CWP at CW Header Unit S2	3.65	11/05/2018 - 09/08/2018	Mong Duong Power Co. Ltd
13	Supply materials, manpower for scaffolding installation - Electric equipment maintenance	1.32	28/05/2018 - 09/08/2018	Mong Duong Power Co. Ltd
14	Supply materials, manpower for scaffolding installation at Boiler	2.94	30/05/2018 - 09/08/2018	Mong Duong Power Co. Ltd
15	Supply materials, manpower, equipment for painting CWP at CW Header Unit S1	3.04	12/06/2018 - 20/09/2018	Mong Duong Power Co. Ltd
16	Supply equipment and manpower for CWP Tie valve installation	1.81	31/08/2018 - 24/09/2018	Mong Duong Power Co. Ltd
17	Blasting and painting Flake Lining system - NSRP	9.03	01/05/2019 - 30/6/2019	Nguyen Hanh Trading and Industry JSC
18	Socket Panel for ESP & SDCC Install Service	1.27	22/07/2019 - 22/10/2019	Mong Duong Power Co. Ltd
19	Provide, Repair Control Panel, PLC Panel, Paint Chamber	10.4	07/02/2020 - 30/05/2020	Mendo Production & Trading JSC
20	Supply materials for Valve of boiler - 2020	7.4	22/05/2020 - 20/10/2020	Mong Duong Thermal power Company
21	Coal Silo Repair	2.6	06/08/2020 - 23/10/2020	Mong Duong Power Co. Ltd

AWARDS, CERTIFICATES



ĐỐI TÁC VÀ KHÁCH HÀNG

Gooiltech always promotes cooperation with domestic and foreign companies and groups to improve capacity and expand markets to countries in the region and the world.



CƠ KHÍ DUYÊN HẢI



PHÚC KHANG



KIM THÀNH



*Customer satisfaction is
the success of Gooiltech*

CONTACT



Km 12+500, Highway 5, Nam Hoa Village, An Hung
Commune, An Dương District, Hai Phong City



+ 84 2258.832.732



info@gooiltech.com.vn



www.gooiltech.com.vn

